



Architecture and  
Landscape Architecture  
Open Day

13th January 2024  
Register at  
[www.myUCD.ie](http://www.myUCD.ie)



UCD  
ARCHITECTURE  
& LANDSCAPE  
ARCHITECTURE

**UNDERGRADUATE  
COURSE ENTRY 2024**





## UCD ARCHITECTURE (DN100)

BSc (Architectural Science) (Hons) (NFQ Level 8) and MArch (NFQ Level 9) or BArchSc (Hons) (NFQ Level 8)

### INTRODUCTION

UCD Architecture is Ireland's longest established and most prestigious architecture course. Over the past century, UCD Architecture has been of central importance to all aspects of Ireland's architectural culture. From O'Donnell + Tuomey to Grafton Architects, many of our graduates have achieved worldwide renown, while our research and graduate courses have contributed at an international level.



#### Minimum CAO Points Requirement

2023: 566\* (Round 2)

2022: 555\* (Final points)

#### Length of Course

3 Years BSc Architectural Science (Hons) + 2 Years MArch (Hons) or 4 Years BArchSc (Hons)

#### CAO Places Available

57

#### Entry Requirements

- English (O6/H7)
- Irish (O6/H7)
- Mathematics (O6/H7)
- A third language (O6/H7)
- Two other recognised subjects (O6/H7)

#### HEAR/DARE Entry Routes

Yes, see [www.myucd.ie/dare](http://www.myucd.ie/dare) or [www.myucd.ie/hear](http://www.myucd.ie/hear)

#### Other School Leaving Examinations

Yes, see [www.ucd.ie/admissions](http://www.ucd.ie/admissions)

#### Level 5/6 QQI-FET Entry Route

None

#### Level 6/7 Progression Entry Route

Yes, see [www.ucd.ie/transfer](http://www.ucd.ie/transfer)

#### Mature Entry Route

Yes, see [www.ucd.ie/maturestudents](http://www.ucd.ie/maturestudents)

#### Open Learning Entry Route

None

### KEY FEATURES



Only Architecture degree in Ireland to be accredited by the professional institute in Ireland (RIAI), and by the Royal Institute of British Architects (RIBA) and which also has International Certification status with the National Architectural Accrediting Board (NAAB) in the USA



The RIBA Gold Medal, the world's most prestigious architecture award, has been won by 2 UCD Architecture adjunct professors (2015) and 2 UCD Architecture alumni (2020)



Exposed to instruction from world-renowned practitioners



Unique facilities in the Richview / Newstead Buildings at Belfield



Home to Ireland's best Architecture Library



Dedicated design studios, workshop, building laboratory, computer labs and exhibition space



International study opportunities (including Europe, Asia, America and Australia)

\* Entry went to random selection





# UCD ARCHITECTURE (DN100)

BSc (Architectural Science) (Hons) (NFQ Level 8) and MArch (NFQ Level 9) or BArchSc (Hons) (NFQ Level 8)

## STUDYING UCD ARCHITECTURE

The main pathway to becoming a professional architect includes three steps: a) Completion of the Bachelor's in Architecture, b) Completion of the Master's in Architecture (MArch) and c) Completion of the Professional Diploma after a minimum of two years in practice.

 <p><b>Year 1</b> Engage with the principles</p>	<p>Architectural Design (Studio-based learning), History &amp; Theory of the Designed Environment, Architecture &amp; its Environment, Architectural Technologies, The Engineering and Architecture of Structures, Into Practice.</p>	
 <p><b>Years 2 &amp; 3</b> Refine your knowledge</p>	<p>Architectural Design (Studio-based learning), History &amp; Theory of the Designed Environment, The Indoor Environment, Architectural Technologies, Theory &amp; Design of Structures, Imagining Architecture, Framework for Practice</p> <p><b>Optional Year Out - Experience the world of work*</b></p>	<p><b>Exit with BSc Architectural Science (Hons)</b></p>
 <p><b>Year 4</b> Expand your Horizons</p>	<p>Design Technologies, Research &amp; Innovation in the Designed Environment, Architectural Design (Studio-based learning), Comprehensive Design Project, Specialised option modules, International study abroad options</p> <p><b>Optional Year Out - Experience the world of work*</b></p>	<p><b>Exit with BArchSc (Hons)</b></p>
 <p><b>Year 5</b> Achieve mastery of your practice</p>	<p>Major Research Essay, Reflective Portfolio, Design Thesis, Architectural Design (Studio-based learning), Professional Studies</p>	<p><b>Exit with MArch (Hons)</b></p>

## WHAT MAKES A GOOD ARCHITECT?

Our Architecture course attracts a diverse cross-section of talents and approaches from the technically minded to the artistically gifted; from the socially conscious to the natural communicators and leaders. All have the capacity to become successful and productive graduates in Architecture.

\* Students are given the choice to take an optional year out after 3rd or 4th Year.  
 \*\* BSc Graduates require a minimum Degree Award GPA of 2.8 to gain automatic entry to the UCD Master of Architecture Degree.

## WHAT'S ON OFFER THROUGH ARCHITECTURE IN UCD?

When students enter Richview, the home of UCD Architecture, they enter a world of creativity, innovation and diversity. Creativity lies at the core of the course. From the outset, the emphasis is on students proposing creative solutions to set problems and situations. Through learning by doing, students propose, test and develop ideas. There is a strong emphasis on group work and collaboration, mainly through design tasks and problem solving.

At UCD our aim is to continuously deepen understanding, extend capacities and broaden horizons in relation to architecture. As your skills in architectural drawing, model making, surveying, scale and measurement develop, design projects of increasing complexity are introduced in which these skills can be applied.

UCD produces architects capable of addressing global and societal issues. The architecture design studios based in the UCD School of Architecture, Planning and Environmental Policy are hubs of creativity, capable not only of producing award-winning designs but also of responding to some of today's greatest issues and challenges, such as increasing urbanisation, the need

for sustainable development, and the possibilities for technological innovation. As a result, the course is constantly evolving, seeking to extend architecture's role and potential in a complex world.

During your time at UCD your lecturers will include many architects who are at the forefront of their profession and have won national and international acclaim for their buildings. The reality of cutting-edge practice feeds directly into the lecture theatre and design studio, encouraging and motivating the student to come up with realistic yet creative answers to real-life problems. At the same time, our academic staff are leading research in areas such as: sustainable development; environmental modelling; technological innovation; and, the history and theory of architecture, cities and landscapes.

If you have a capacity and passion for creativity, for making things through technological invention or artistic experimentation, and you're excited by the idea of designing buildings, urban environments and landscapes, then this course is for you.

## EDUCATIONAL MODEL

Entrants into UCD Architecture are awarded a Master's degree (MArch) upon completion of the full five-year programme of study which comprises the three-year BSc (Architectural Science) degree followed by the two-year Master's programme (MArch). Students can also exit after four years with the BArchSc degree.

Having satisfactorily completed the first three years of the architectural course, students will be eligible for the BSc (Architectural Science) degree or may complete an additional year for the Bachelor of Architectural Science degree. For follow-on entry into the MArch, students must satisfy the progression requirement.

Progression requirement from BSc (Architectural Science) to MArch: minimum 3rd Year/degree award GPA of 2.8 (mid 2H2) for automatic progression. Students who do not achieve a GPA of 2.8 will be offered an interview to assess their suitability to progress.

For those who do not continue with the MArch course,

the bachelor's qualification provides an opportunity to pursue associated professions such as landscape architecture, planning or research, and also an option to transfer into other areas of study.

Throughout this degree, two main elements are taught each year: the design project and the lecture programme. The design project is based in our design studios and taught through a combination of lectures, individual tuition, field trips, group tutorials, large reviews and exhibitions (architectural design, drawing and model making). The lecture programme can be grouped under three broad headings:

**Technical:** Architectural Technologies, Structures, Environmental Science

**Cultural:** Architectural History & Theory, Ecology, Conservation, Perspectives on Architecture

**Managerial:** Professional studies

A combination of continuous assessment and end-of-trimester written examinations is used. In your final year, you'll submit a report of your design research project.

## Career opportunities

Most architectural graduates go into architectural practice or on to further academic study in architecture or related subjects. Your skills are transferable, which enables you to work anywhere in the world. Some architects also work in other areas such as:

- Planning
- Cultural and artistic practice
- Heritage site management
- Curatorial work
- Landscape

UCD Architecture offers a wide range of taught Master's, research Master's and doctorate programmes.







# UCD LANDSCAPE ARCHITECTURE (DN120)

BSc (Hons) (NFQ Level 8)

## INTRODUCTION

UCD is at the forefront of Landscape Architecture education in Ireland. UCD is currently the only university in Ireland to offer an undergraduate degree in Landscape Architecture. This course is accredited by the Irish Landscape Institute (ILI) and recognised by the International Federation of Landscape Architects (IFLA – Europe).

If you love design, nature and the outdoors, are interested in society and the ways that we live, and want to make a better, more beautiful and sustainable future for our towns and countrysides, then Landscape Architecture is for you.

This exciting programme teaches you how to design with nature to improve our environment and the quality of our lives. Landscape Architects' work combines scientific and cultural understanding, design creativity, and knowledge of materials and structures with an understanding of ecology, land use and ecosystems. They work on all sorts of projects, all over the world, designing habitats for humans and non-humans: homes for city birds, playgrounds for children, rooftop gardens, streetscapes, city parks and even cities themselves. They transform urban and rural land, and water-bodies, and advise on countryside matters. Landscape design engages environmentalism, urbanism and culture, teaching important transferable skills that you'll use wherever you are, whatever you do in the future.

UCD Landscape Architecture is taught in unique facilities in the School of Architecture, Planning and Environmental Policy in the Richview/Newstead buildings on the Belfield campus. These facilities include bright and airy studios, a well-equipped workshop and building laboratory, exhibition spaces and the best architectural library in the country.

## KEY FEATURES



Accredited by the Irish Landscape Institute [ILI] and recognised by the International Federation of Landscape Architects [IFLA-Europe]



Unique facilities in the Richview/Newstead Buildings at Belfield



Dedicated design studios, workshop, building laboratory, computer labs and exhibition space



6-8 month Professional Work Experience Internship opportunity



Access to UCD Horizons Elective Modules



International study opportunities (including Europe, Asia, America and Australia)



Home to Ireland's best Architecture Library

### Minimum CAO Points Requirement

2023: 477 (Round 1)

2022: 440 (Final points)

### Length of Course

4 Years (BSc) (Hons)

### CAO Places Available

28

### Entry Requirements

- English (O6/H7)
- Irish (O6/H7)
- Mathematics (O6/H7)
- Three other recognised subjects (O6/H7)

### HEAR/DARE Entry Routes

Yes, see [www.myucd.ie/dare](http://www.myucd.ie/dare) or [www.myucd.ie/hear](http://www.myucd.ie/hear)

### Other School Leaving Examinations

Yes, see [www.ucd.ie/admissions](http://www.ucd.ie/admissions)

### Level 5/6 QQI-FET Entry Route

Yes, see [www.ucd.ie/FET](http://www.ucd.ie/FET)

### Level 6/7 Progression Entry Route

None

### Mature Entry Route

Yes, see [www.ucd.ie/maturestudents](http://www.ucd.ie/maturestudents)





### Open Learning Entry Route

None



# UCD LANDSCAPE ARCHITECTURE (DN120)

BSc (Hons) (NQF Level 8) and MLA (NQF Level 9)

 <p><b>Year 1</b> Engage with the principles</p>	<p>&gt; Landscape Architectural Design (Studio-based learning), Land Use &amp; the Environment, Understanding Landscape, Plants &amp; Landscape Architecture. <b>Options:</b> Intro to Archeology of Ireland, Cell &amp; Plant Biology, Environmental Change &amp; Biology, Dynamic Earth.</p>
 <p><b>Year 2</b> Refine your knowledge</p>	<p>&gt; Landscape Architectural Design (Studio-based learning), Landscape Ecology, Landscape Trees &amp; Shrubs, Soil Resources, Landscape Theory &amp; History. <b>Options:</b> Intro to Spatial Planning, Diversity of Plant Form &amp; Function, Forests, Climate and Carbon.</p>
 <p><b>Year 3</b> Expand your Horizons</p>	<p>&gt; Landscape Architectural Design (Studio-based learning), Diversity in the Rural Landscape, GIS for Environmental Assessment, Placemaking, History &amp; Theory of the Designed Environment. <b>Options:</b> Diversity of Plant Form &amp; Function, Forests, Climate and Carbon, Landscape Design Competition, Site Specific Design. <b>Internship and Study Abroad/Exchange opportunities</b></p>
 <p><b>Year 4</b> Achieve mastery of your practice</p>	<p>&gt; Landscape Architectural Design (Studio-based learning), Landscape Architectural Thesis, Environmental Assessment, Landscape Research, Rural and Landscape Planning, Planning Law. <b>Options:</b> Introduction to Urban Design, Site Specific Design, Placemaking, Planning, Society and Diversity, Landscape Design Competition.</p>
	<p><b>Exit with BSc (Hons)</b></p>

## WHAT MAKES A GOOD LANDSCAPE ARCHITECT?

Our Landscape Architecture course attracts a diverse cross-section of talents and approaches from the ecologically minded to the artistically gifted; from the socially conscious to the natural communicators and leaders. All have the capacity to become successful and productive graduates in Landscape Architecture.



## WHAT'S ON OFFER THROUGH LANDSCAPE ARCHITECTURE IN UCD?

The design studio is central to Landscape Architecture. You will spend most of your time in the studio, pursuing individual and small group project work structured to foster the creative problem-solving skills needed to develop an understanding of space and context, and a respect for natural processes. You will learn by doing design projects that allow you to develop creative skills and apply knowledge taught through lectures, seminars, drawing classes, field trips, reviews, readings, and individual and group tutorials.

Studio programmes are taught by practising landscape architects, many of whom are leaders in their profession whose work is widely recognised on a global level.

## EDUCATIONAL MODEL

The UCD Landscape Architecture degree course comprises two main elements: studio project work and lectures. Design modules make up 50% of this degree course and students spend half of the week in the studio. Design methodology is taught and practiced in studio-based landscape design modules involving on-site projects and requiring an important element of self-direction. As students progress through the course they will learn to inform design decisions by analysis of information concerning the natural and cultural processes affecting particular case studies. The other half of the course involves lecture modules, which provide theoretical material in the areas of ecology and the earth sciences, landscape planning, management, design theory and aesthetics. In addition to their core landscape architecture modules, students choose between option and elective modules across a varied range of subjects from throughout the School, related programmes, and the UCD Horizons programme, which enables students to compose their own individual study programme.

The programme also incorporates a 6-8 month Internship in the 3rd Year, designed to integrate students' academic and career interests with practical work experience. The Landscape Architecture degree at UCD offers a range of European and international exchange opportunities. Students regularly spend time abroad, either on short field trips, participating in intensive design studios with students from other universities, or opting to spend a trimester studying at one of our partner universities.

Our education model is designed to give students the creative ability and discipline to work alone or as part of a team of specialists. As graduates, Landscape Architects frequently work as part of large multidisciplinary teams alongside architects, engineers, planners, artists, ecologists, and surveyors. Such is the broad overview gained in UCD Landscape Architecture that graduates are often chosen as the master planners for large-scale projects.

Lectures fall into three main categories:

**Ecological and Environmental Sciences:** Land Use & the Environment, Environmental Impact Assessment, Landscape Ecology, Soils, Biology, Botany, Trees & Shrubs.

**Human Sciences, Technology and Culture:** Landscape History & Theory, Archaeology, Rural & Landscape Planning, Aesthetics, Drawing and Landscape Representation.

**Professional and Managerial Skills:** Professional Practice, Law, Research, Verbal & Graphic Communication and Writing.

A combination of regular studio reviews, reports, as well as end-of-trimester written and portfolio examinations is used to assess your work. The 4th year concludes with a design thesis based on a subject of your own choosing.

## Career & graduate study opportunities

Graduates of UCD Landscape Architecture work all over the world because of their transferable skills. The increased emphasis at local and national level on the importance of the environment, green spaces, and sympathetic and aesthetically pleasing developments, means that landscape architecture is an expanding profession. Salaries are on a par with other professionals within conservation and the built environment, and the variety of employment opportunities makes landscape architecture an exciting option.

Our students become professional landscape architects, setting up in business, working in private practice, for governmental bodies or NGOs. Others go onto further academic study in landscape architecture, or related subjects and some go onto work in areas such as:

- Environmental and Ecological Policy-Making
- Conservation and Resource Management
- Planning or Urban Design

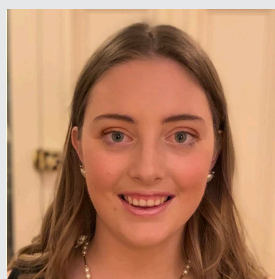
The majority of our students become professional landscape architects. After two years of approved graduate work experience, our graduates can sit the Irish Landscape Institute (ILI) professional practice exams leading to full professional membership of the ILI. There is also the Master's of Landscape Architecture (MLA) available for those who wish to pursue the subject at taught graduate level. The School of Architecture also offers related Master's by Research and Doctoral programmes.



### Jennifer Fox, Architecture Student

Studying Architecture at UCD allows me to explore my passions through the study of art, design, history, engineering and physical construction. Our time is mainly spent in studio working on design projects individually or in teams. Aside from this, I've spent my time in a wide variety of lectures; construction and 3D modelling workshops held weekly in our building lab; reading through

the large collection of architectural books and collections in Richview library and working on various creative projects. I have greatly enjoyed working closely with practicing architects who give great insight on current design practices. A variety of other opportunities including yearly trips abroad to study the architecture of other cities such as Rome and Paris.



### Niamh Conlan, Landscape Architecture Graduate

I chose to study Landscape Architecture at UCD due to my love of design, nature and the outdoors. I was always interested in society and the way that people live. This course at UCD offers a wide range of exciting modules in various related topics such as land use, the environment, planning, ecology, and urban design. The design studio is central to this course and has prepared me for my future career by allowing me to build on my environmental knowledge

design skills while using technical and technological approaches. This degree at UCD offered me a wide range of exciting opportunities such as a trimester abroad, various class trips around Ireland and Europe and an internship in a Landscape Architecture firm. I completed my exchange at The University of Hong Kong which proved to be the most exciting and rewarding opportunity of my life. Not only has Landscape Architecture at UCD prepared me for my future career but it also has offered me once in a lifetime opportunities.



#### UCD ENGINEERING AND ARCHITECTURE OFFICE

Room 122 & Room 126 (First Floor), Engineering and Materials Science Centre,  
University College Dublin, Belfield, Dublin 4.

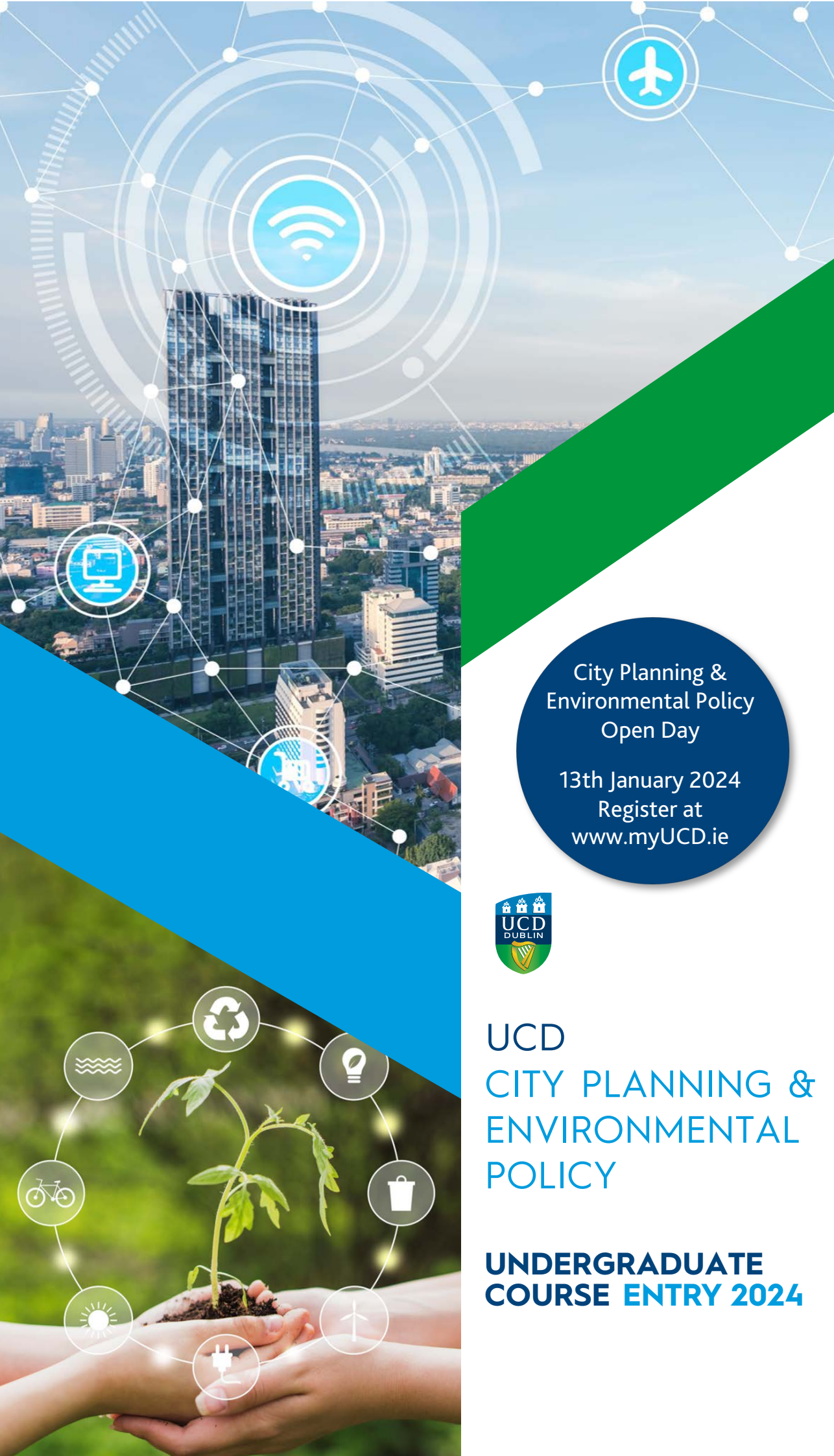
+353 1 716 1781  
katie.oneill@ucd.ie  
www.ucd.ie/eacollege

Instagram @UCDEngArch  
Facebook @UCDEngArch  
Youtube @UCDEngArch  
Twitter @UCDEngArch



Scan to learn more  
at myucd.ie





City Planning &  
Environmental Policy  
Open Day

13th January 2024  
Register at  
[www.myUCD.ie](http://www.myUCD.ie)



## UCD CITY PLANNING & ENVIRONMENTAL POLICY

**UNDERGRADUATE  
COURSE ENTRY 2024**



# UCD CITY PLANNING & ENVIRONMENTAL POLICY (DN130)

BSc (Hons) (NFQ Level 8)

## INTRODUCTION

UCD Planning is part of the oldest, largest and most respected School of Architecture, Planning & Environmental Policy in Ireland. Planning and Environmental Policy at UCD enjoys a strong international reputation with our graduates employed in the public and private sectors, in Ireland, and internationally.

Our degree in City Planning & Environmental Policy is about solving complex issues that we experience in our everyday lives. How can we provide housing for everyone? How can we reduce our climate impact and conserve our natural environment? Where should we build our schools and shops?

This unique degree brings together a focus on the city, the environment and design and links them with clear routes to professions and careers. So, if you are considering a career as a qualified planner or environmental policy analyst this degree is for you. These professions allow you to visualise new patterns and ideas for cities and to bring this vision to reality by activating social change and promoting sustainable development. This course gives you the skills to enable real world change.

## INTERNATIONAL STUDY OPPORTUNITIES

Students have the opportunity in their third year to spend a trimester studying abroad either inside or outside Europe. Students have previously studied in France, the Netherlands and the USA.

## KEY FEATURES



Unique facilities including dedicated planning & design studios and computer labs



Home to Ireland's best Architecture, Planning and Map Library



Celebrating over 50 years of Planning education



Home to 30+ years of Environmental Policy programmes



Leading Research Centre in Spatial Planning and Environmental Policy



Member of the Association of European Schools of Planning



The School is seeking accreditation for this new degree from both the Royal Town Planning Institute and Irish Planning Institute

### Minimum CAO Points Required

2023: 487 (*Round 1*)

2022: 455 (*Final points*)

### Length of Course

4 Years (BSc)(Hons)

### CAO Places Available

29

### Entry Requirements

- English (O6/H7)
- Irish (O6/H7)
- Mathematics (O6/H7)
- Three other recognised subjects (O6/H7)

### HEAR/DARE Entry Routes

Yes, see [www.myucd.ie/dare](http://www.myucd.ie/dare) or [www.myucd.ie/hear](http://www.myucd.ie/hear)

### Other School Leaving Examinations

Yes, see [www.ucd.ie/admissions](http://www.ucd.ie/admissions)

### Level 5/6 QQI-FET Entry Route

None

### Level 6/7 Progression Entry Route

None

### Mature Entry Route

Yes, see [www.ucd.ie/maturestudents](http://www.ucd.ie/maturestudents)

### Open Learning Entry Route

Yes, see [www.ucd.ie/openlearning](http://www.ucd.ie/openlearning)



## WHAT'S ON OFFER THROUGH CITY PLANNING & ENVIRONMENTAL POLICY IN UCD?

As this is a programme focused on tackling real world issues, you will engage with real world topics from the outset. This involves field trips, studio work and pioneering case study analysis. Emphasis is placed on integrating understanding with imagination so that students learn to formulate and test innovative solutions to the planning and environmental challenges facing society. A small class size and the interactive learning environment ensures an enjoyable experience that stimulates creativity and ownership of your career path.

UCD produces planners and environmental policy experts skilled at addressing pressing global, national and local social, political, economic and

environmental issues. Therefore, we continually review and update the content of our programme to maintain the high calibre of graduates produced by the School. The School promotes a research-led teaching approach whereby cutting-edge research undertaken by staff feeds seamlessly into lectures. This process is advanced by a teaching team that enjoys an international reputation for consistently producing path-defining research. A key feature of the programme is the delivery of lectures by practising planners and environmental policy experts at the vanguard of their professions. The inclusion of teaching by such field-shaping practitioners ensures that students are continually exposed to leading-edge practice, thereby favourably positioning the School's graduates in the employment market.

## EDUCATIONAL MODEL

The City Planning & Environmental Policy degree integrates subjects which will deepen and broaden your understanding of the environmental, social and economic dimensions of sustainable development. The programme is delivered in two parts:

In **Part 1** you will be provided with a comprehensive introduction to Spatial Planning and Environmental Change & Policy by taking an array of core modules. You will begin to develop your awareness of the physical layout and design of urban areas while you deepen your knowledge of environmental policy and the tools to effect change.

**Part 2** is the time for acquiring practical knowledge and skills. You will develop a more in-depth understanding of the how to plan for positive change by exploring the interactions and interdependencies of land use, transportation and urban design, as well as social and economic issues.

You will also acquire practical communication and analytical skills, in addition to competency in geographic information systems (GIS).

**First Year:** Introduction to City Planning • Environmental Change & Policy • History of City Planning • Urban Design • Environmental Economics • Inequality & Social Justice in Irish Society • Planning & Development Studio

**Second Year:** Local Planning Studio • Community Development & Planning • Geographical Information Systems • Comparative Planning • Urban & Regional Economics • Case Studies in Environmental Policy • Social Spatial Dynamics • Rural Change, Development & Planning

**Third Year:** Environmental Management • Climate Policy & Politics • Transport Environment and Sustainability • Smart Cities. In the second Trimester there is the opportunity to pursue a work-based project or to study abroad.

**Fourth Year:** Planning Methods and Leadership • Planning Design and Development • Planning Law • Environment and Planning • Plan Making Studio

## Career & graduate study opportunities

A degree in City Planning & Environmental Policy provides you with both strong analytical skills and the ability to think critically about the built and natural environment. This four year degree programme will provide students with the necessary requirements to pursue a career as a professional planner.

Graduates of UCD City Planning & Environmental Policy can find employment both in Ireland and internationally. While the traditional employers of graduates are city and county councils, many graduates have found rewarding employment in

private sector consultancies, multinational businesses, a variety of governmental bodies and NGOs. There are increasing opportunities for planners in the provision of infrastructure, for example working within the renewable energy sector, or with the large companies and agencies delivering transport and water infrastructure projects. Salaries equal and commonly exceed those of other built environment professions.

Planners are currently in high demand, meaning that those who graduate as a fully qualified planner can expect to quickly find well paid employment.



## Evan Rossiter Graduate

**Why did you choose to study at UCD?** I chose this course because I had a wide array of interests, particularly in geography and the environment, and there was no other course that combined my interests as well as this one. UCD has amazing facilities and the staff seemed friendly and helpful. Also, class size was a big thing for me because I came from a very small secondary school, so having only about 30 in my whole year really helped me settle into university life. I have thoroughly enjoyed my experience here at UCD.

**Does this course have good career opportunities?** There is a vast array of careers that can potentially come out of this degree such as being a planner or urban designer but personally, I'm looking into environmental consultancy as environmental policy has always been a big interest of mine. There are jobs both in the private and public sector associated with this degree as sustainable development and the impact of the built environment is increasing in importance. UCD also provides multiple opportunities for you to establish connections with potential future employers such as career fairs, internships, and guest lecturers.

**Does UCD provide enough supports to students?** During my time at UCD I have been extremely well supported as a student. The university provides counselling services, writing centres and numerous other services which assisted me greatly throughout my degree. The staff are also incredibly approachable, understanding and assisted me through many difficult situations.

**Did you get involved with any student clubs and societies?** Yes, the multitude of sports clubs and societies helped me to immerse into the college experience, develop my thoughts and character and pursue my passions. The planning and environmental policy society, UCD Ultimate Frisbee and the Triathlon clubs were particularly pivotal.



### UCD ENGINEERING AND ARCHITECTURE OFFICE

Room 122 & Room 126 (First Floor), Engineering and Materials Science Centre,  
University College Dublin, Belfield, Dublin 4.

+353 1 716 1916  
katie.oneill@ucd.ie  
[www.ucd.ie/eacollege](http://www.ucd.ie/eacollege)

Instagram @UCDEngArch  
Facebook @UCDEngArch  
Youtube @UCDEngArch  
Twitter @UCDEngArch



Scan to learn  
more at [myucd.ie](http://myucd.ie)